



**MISTORIA**  
ESTATE AGENTS



# 1703 Beetham Tower Liverpool

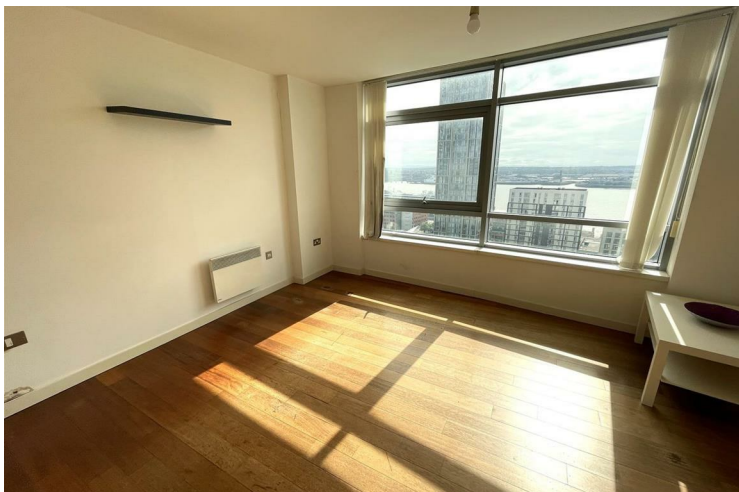
**£120,000**  
**Leasehold**

Welcome to this modern one-bedroom apartment located on Old Hall Street in the heart of Liverpool's bustling business district. Spanning an impressive 624 square feet, this well-presented residence is situated on the 17th floor, offering breathtaking views of the iconic Liverpool waterfront that are sure to captivate any resident.

As you enter the apartment, you are greeted by a spacious lounge that provides a perfect space for relaxation or entertaining guests. The contemporary kitchen is designed with functionality in mind, making it ideal for both cooking and socialising. The large bedroom is thoughtfully designed, featuring fitted wardrobes that provide ample storage space while maintaining a sleek and tidy appearance.

This property is not only about the interior; it is also located in a vibrant area filled with local amenities, including a variety of bars and restaurants, ensuring that you are never far from entertainment and dining options. Additionally, the apartment benefits from a 24-hour concierge service and a secure entrance, providing peace of mind and convenience for residents.

Whether you are a professional seeking a stylish city pad or an investor looking for a prime rental opportunity, this apartment on Old Hall Street is a remarkable choice. With its modern features, stunning views, and prime location, it truly offers a unique living experience in one of Liverpool's most sought-after areas. Don't miss the chance to make this exceptional property your new home.





- SUPERBLY LOCATED 17TH FLOOR ONE BED APRTAMENT IN OLD HALL STREET, LIVERPOOL • INTERCOM, LIFT & CONCIERGE,

#### Disclaimer

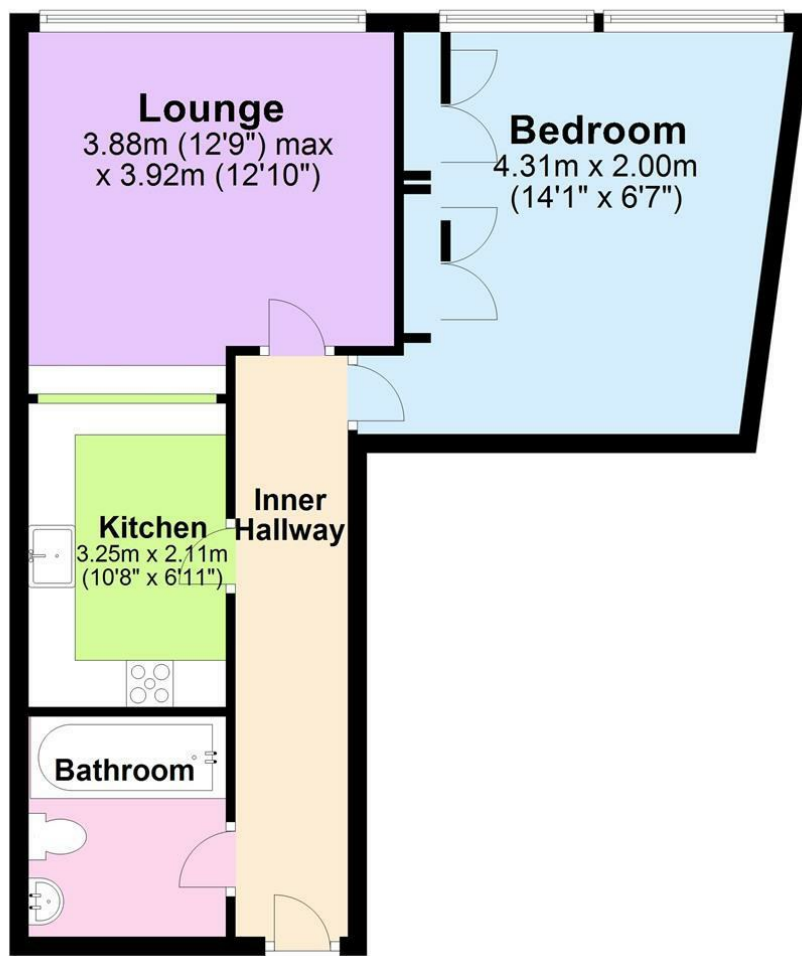
The information and images provided in this property advertisement are intended for guidance purposes only. While we make every effort to ensure the accuracy of the details, we strongly recommend that interested parties view the property in person to confirm the property's condition and suitability for their specific requirements. The photographs used in this advertisement may have been digitally enhanced and may not accurately represent the current condition of the property. Any measurements or distances provided are approximate and should not be relied upon for any purpose. Furthermore, the description and details provided are based on the landlord's understanding and may be subject to change without notice. Prospective tenants are advised to verify any specific details that are important to them before entering into any agreement. We do not accept any liability for any loss or damage, whether direct or indirect, arising from reliance upon the information provided in this advertisement. We strongly advise all parties to seek professional advice and conduct their own due diligence before making any decisions or commitments related to this property. By viewing this advertisement, you agree to the above disclaimer and acknowledge that any reliance on the information provided is at your own risk. Please note that this disclaimer is subject to change and may be updated without prior notice



- STUNNING VIEWS OF THE ICONIC LIVERPOOL WATERFRONT • MODERN KITCHEN OPEN PLAN KITCHEN AND LIVING AREA • NEAR AMENITIES, TRANSPORT LINKS AND THE CITY CENTRE. • NO CHAIN !!!



## 17th Floor



Energy Efficiency Rating		
	Current	Potential
Very energy efficient - lower running costs		
(92 plus) A		
(81-91) B		
(69-80) C		
(55-68) D		
(39-54) E		
(21-38) F		
(1-20) G		
Not energy efficient - higher running costs		
<b>England &amp; Wales</b>	EU Directive 2002/91/EC	
		87
	76	

Agents Note: Whilst every care has been taken to prepare these particulars, they are for guidance purposes only. All measurements are approximate and are for general guidance purposes only and whilst every care has been taken to ensure their accuracy, they should not be relied upon and potential buyers/tenants are advised to recheck the measurements

Pall Mall Liverpool Mistoria  
22 Pall Mall  
Liverpool  
L3 6AL

0151 282 1539  
info@mistoria.co.uk  
mistoria.co.uk

